



# HMI HAMPSTEAD MANOR

## 10 reasons to buy

Located on a leafy road only moments from the centre of Hampstead Village, Hampstead Manor embraces all of the qualities that have long made NW3 one of the most desirable British postcodes.



### 10

#### The Final Collection

This collection of ten homes is the last opportunity to purchase at Hampstead Manor, offering a range of homes from newly refurbished grade II listed 1 and 2 bedroom apartments, 2 to 3 bed duplex apartments and 4 bed, 4 storey townhouses. All homes have been restored with minute attention to detail, making Hampstead Manor a prime example of British imagination, tradition and artistry.

### NW3

#### Postcode

The strength of demand in the Hampstead area is underpinned by its established location, proximity to green space and excellent education infrastructure. Hampstead is also on the doorstep of Belsize Park, St John's Wood, Regent's Park and Marylebone.



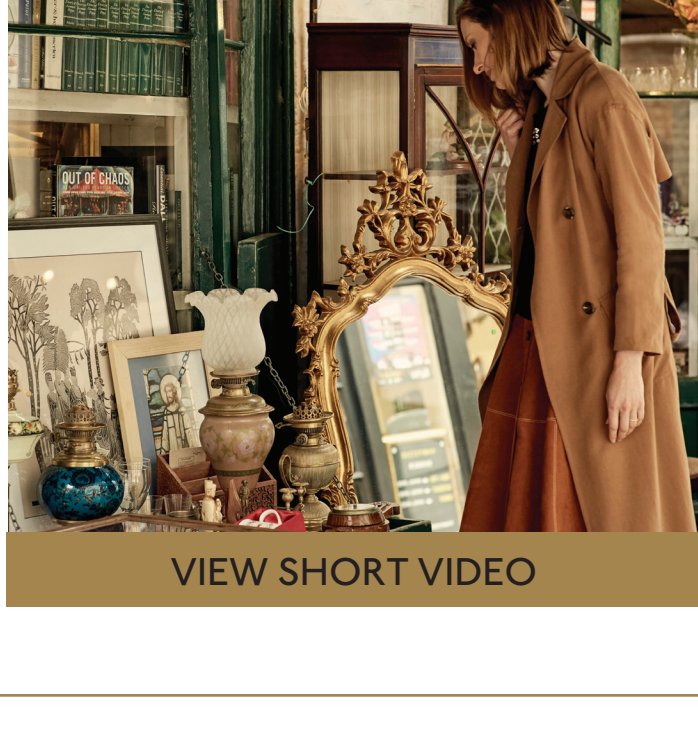
#### Well connected

Hampstead Manor is only a 6 minute drive to Hampstead Underground Station (Northern Line) in our chauffeured town car. Residents will be able to reach King's Cross in 10 minutes and Victoria, Oxford Circus and Bank in 17 minutes. Hampstead combines the best of both worlds - tranquillity of village life within easy reach of central London.

### Village Life

#### A variety of retail and restaurants

There is plenty of exploring to do in Hampstead, with cobbled streets lined with a range of boutique shops and international brands such as Melrose and Morgan, Gail's, Nicole Farhi and Aesop.



VIEW SHORT VIDEO



### Steeped in History

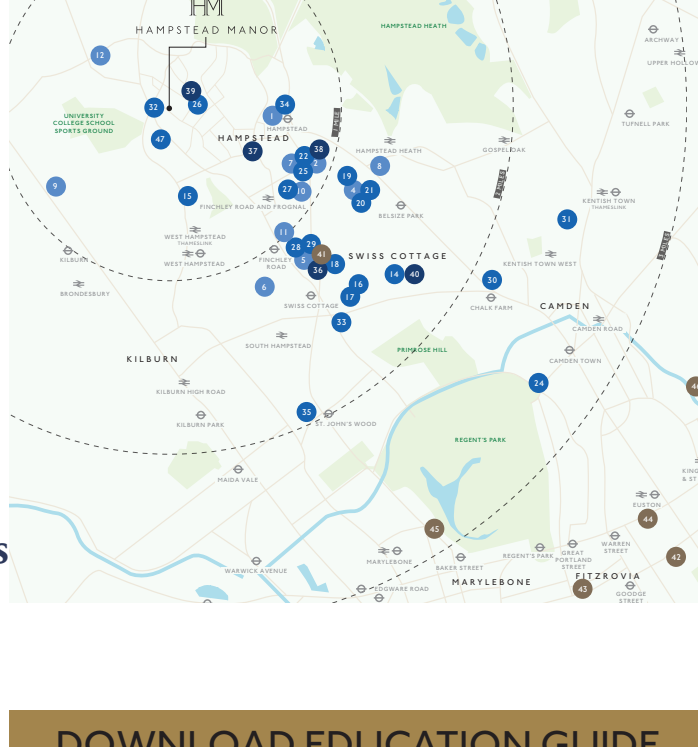
#### Distinguished living

Dating back to 1843, the Greek Revival Kidderpore Hall was originally constructed by globetrotting merchant John Teil. By the turn of the century the building was the seat of Westfield College - one of the few places offering a higher education to female scientists.

### World-class Education

#### Outstanding schools

With a prominent network of Ofsted recommended and renowned independent schools all within easy reach, the local area provides access to educational excellence at all stages of life with a selection of innovative, high-achieving further education options, and some of the finest universities in the world.



DOWNLOAD EDUCATION GUIDE



### Gardens, Orchards and Greens

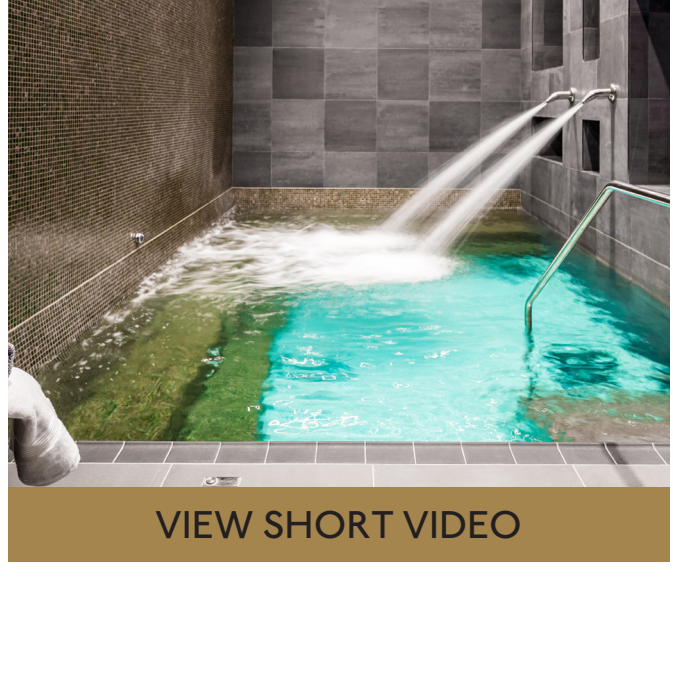
#### A leafy and secluded oasis

On the doorstep of 790 acres of open green space at Hampstead Heath, Hampstead Manor offers a welcome reprieve from London living. Set within 4 acres of landscaped gardens, this oasis is abound with spots to stroll, read a book and enjoy the serenity and fresh air.

### Five-star Hotel Lifestyle

#### Residents only

Residents benefit from exclusive access to the state-of-the-art gym and spa, swimming pool, 24-hour concierge service, secure underground car parking, residents' town car service and beautifully landscaped gardens.



VIEW SHORT VIDEO

### 2.3x

#### Average price growth

of Mount Anvil development vs. other new builds in the same postcode.

### Heritage and Culture

#### Famous residents

Few places in the world can boast such architecture and history as this prized north London enclave. The area's 100+ British Heritage blue plaques, more than any other district in London, reveal the former homes of celebrated writers such as Charles Dickens, John Keats and George Orwell.



Mount Anvil, better London living